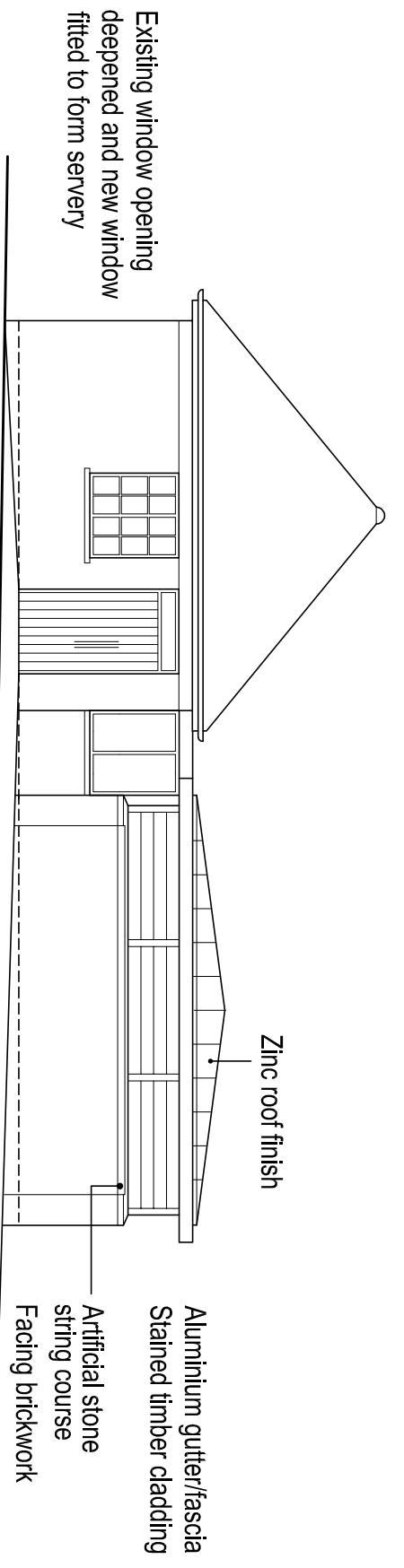


EAST





SOUTH



NOTES:
 THIS DRAWING IS COPYRIGHT AND MUST NOT BE REPRODUCED WHOLLY OR IN PART WITHOUT PRIOR PERMISSION.
 THIS DRAWING IS TO BE READ IN CONJUNCTION WITH ALL RELEVANT DRAWINGS AND DOCUMENTS ISSUED BY PEP ARCHITECTS LTD & OTHER CONSULTANTS.
 DO NOT SCALE FROM THIS DRAWING.

PROJECT		ASHLYNS SCHOOL ALL WEATHER PITCH FACILITIES											
DRAWING		CHANGING ROOM BLOCK - EAST AND SOUTH ELEVATIONS											
Scale	1:100	Date	Mar 08	Drawn	LB	Checked	RT	Job no	07ASP	Drawing no	212	Revision	B


PEP Architects Ltd
 9 High Street TRING Herts HP23 4AB
 Tel 01442 827106 Fax 01442 827403
 e-mail mail@peparchitects.co.uk

IN ASSOCIATION WITH

FSSP ARCHITECTS